

abbotFox

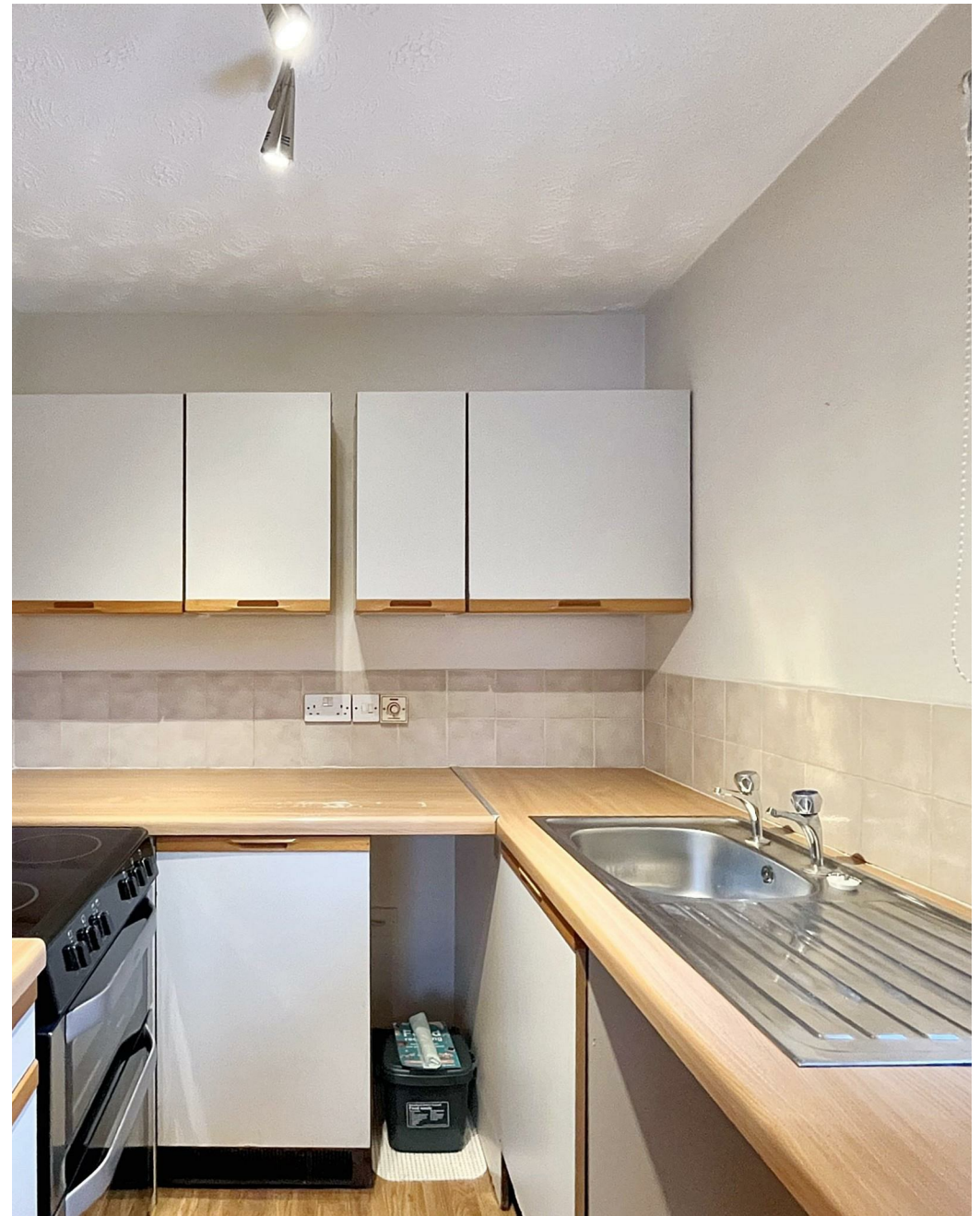


Manor Court, Aylsham, Norwich
Guide Price £140,000

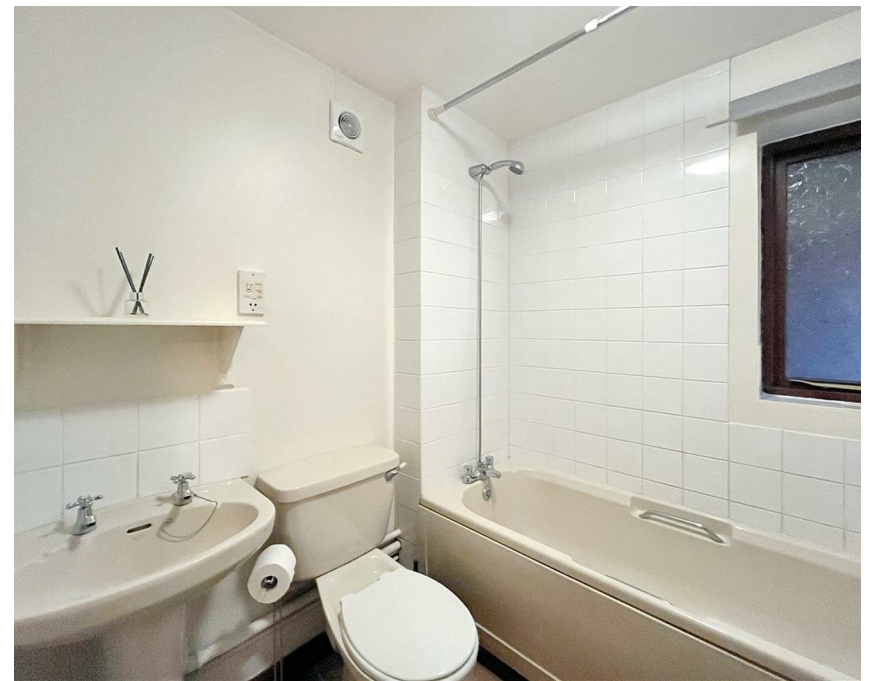
“

We are a team of genuine individuals who hold a deep passion for both property and marketing. Collectively, we bring over 70 years of experience in the property market of Norfolk and Suffolk. Our affection for both counties runs deep, and we are enthusiastic about sharing our passion with you.

Colin McKenzie | **Branch Partner**







THE DETAIL _____

abbotFox presents this chain free, ground floor apartment. Set within the popular and well-serviced town of Aylsham, this home is ideally located within easy reach of the town centre and a wealth of local amenities.

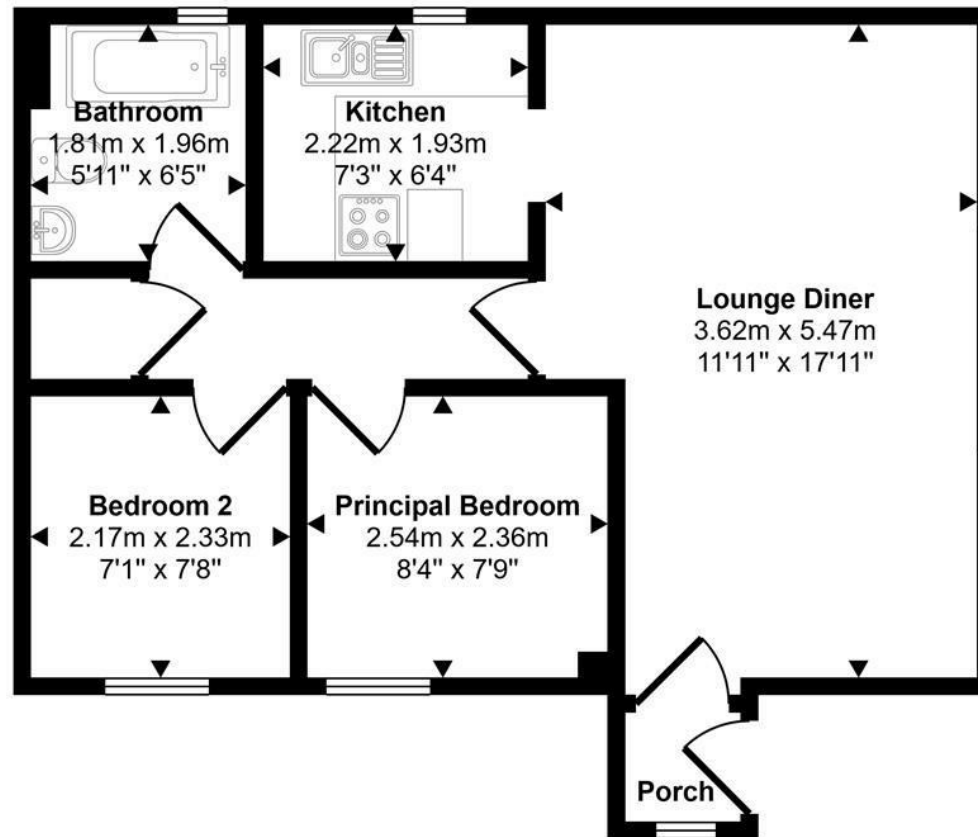
The accommodation on offer is neatly arranged and comprises; a private porch entrance, generous lounge diner, kitchen, two bedrooms and a family bathroom. The property further benefits from an allocated parking space. An ideal opportunity for any first time buyer, an internal viewng comes highly recommended.

Guide Price £140,000 - £150,000



THE HIGHLIGHTS _____

Approx Gross Internal Area
45 sq m / 482 sq ft



Floorplan

This floorplan is only for illustrative purposes and is not to scale. Measurements of rooms, doors, windows, and any items are approximate and no responsibility is taken for any error, omission or mis-statement. Icons of items such as bathroom suites are representations only and may not look like the real items. Made with Made Snappy 360.

Let's talk

01603 660000

sales@abbotfox.co.uk

@abbotfox

EPC RATING - C

Disclaimer – In accordance with the Property Misdescriptions Act, the company abbotFox gives notice that all descriptions, references to condition, necessary permissions for use and other details are given in good faith and believed to be correct, but any purchaser should not rely on them as statements of fact, and must satisfy themselves by inspection or other means, as to their accuracy.